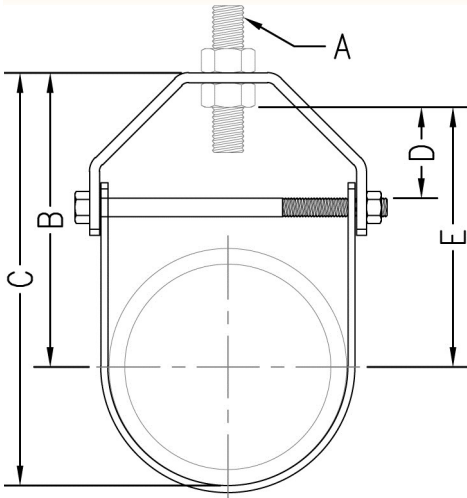




www.phd-mfg.com

# CLEVIS HANGERS

## FIG. 450, 450F, 451, 451F, 453, & 454 STANDARD CLEVIS HANGER



**Function:** Designed for the suspension of non-insulated stationary pipe lines. Fig. 450F has a layer of felt which separates the pipe from the hanger to reduce vibration and sound. The PVC coating on Fig. 453 protects the pipe from the metal surface of the hanger.

**Material:** Carbon steel  
**Finish:** Plain (Fig. 450), plain with felt lining (Fig. 450F), electro-galvanized (Fig. 451), electro-galvanized with felt lining (Fig. 451F), plain with PVC coating (Fig. 453), or hot dipped galvanized with electro-galvanized hardware (Fig. 454)

**Approvals:** Underwriters' Laboratories Listed in the U.S. (UL) and Factory Mutual Approved for 2 1/2" (65) to 8" (200) only. Complies with Federal Specification A-A-1192A (Type 1) and Manufacturers' Standardization Society ANSI/MSS SP-58 (Type 1) which supersedes ANSI/MSS SP-69.

**Ordering:** Specify figure number and pipe size.



Fig. 450F, 451F, & 453 only available up to 8" (200) Pipe Size

**NOTE:** Use of an upper locknut ensures proper performance. Pipe spacers provided on 30" (750mm) and larger clevises. If ordering Fig. 450F felt lined hangers for pipe sizes of 3 1/2" (90mm) or under, order the next largest size to allow for the thickness of the felt lining. When an oversized clevis is used, a pipe spacer should be placed over the clevis bolt to prevent the lower U-strap from moving inward.

Pipe Size	Rod Size A	B		C		Adjustment D		E		Cross Bolt	Max. Rec. Load		Wt. Each		
											lbs.	kN	lbs.	kg	
1/2	(15)	3/8	27/16	(61.9)	27/8	(73.0)	1 1/8	(28.6)	2	(50.8)	1/4	730	(3.25)	0.24	(0.11)
3/4	(20)	3/8	25/8	(66.7)	3 1/8	(79.4)	1 1/4	(31.8)	2 3/16	(55.6)	1/4	730	(3.25)	0.24	(0.11)
1	(25)	3/8	3 1/16	(77.8)	3 3/4	(95.3)	1 5/8	(41.3)	2 5/8	(66.7)	1/4	730	(3.25)	0.28	(0.13)
1 1/4	(32)	3/8	3 3/8	(85.7)	4 3/16	(106.4)	1 5/8	(41.3)	2 15/16	(74.6)	1/4	730	(3.25)	0.32	(0.15)
1 1/2	(40)	3/8	3 1/2	(88.9)	4 7/16	(112.7)	1 1/2	(38.1)	3 1/16	(77.8)	1/4	730	(3.25)	0.40	(0.18)
2	(50)	3/8	3 3/4	(95.3)	5	(127.0)	1 5/8	(41.3)	3 5/16	(84.1)	1/4	730	(3.25)	0.52	(0.24)
2 1/2	(65)	1/2	4 5/8	(117.5)	6 1/16	(154.0)	2	(50.8)	4 1/16	(103.2)	3/8	1350	(6.01)	0.72	(0.33)
3	(80)	1/2	4 7/8	(123.8)	6 5/8	(168.3)	1 13/16	(46.0)	4 1/4	(108.0)	3/8	1350	(6.01)	0.78	(0.35)
3 1/2	(90)	1/2	4 1/2	(114.3)	6 1/2	(165.1)	1 1/4	(31.8)	3 7/8	(98.4)	3/8	1350	(6.01)	1.16	(0.53)
4	(100)	5/8	5 1/2	(139.7)	7 11/16	(195.3)	1 3/4	(44.5)	4 11/16	(119.1)	3/8	1430	(6.36)	1.35	(0.61)
5	(125)	5/8	6 1/8	(155.6)	9 1/8	(231.8)	1 7/8	(47.6)	5 5/16	(134.9)	1/2	1430	(6.36)	1.88	(0.85)
6	(150)	3/4	6 7/8	(174.6)	10 1/8	(257.2)	1 5/8	(41.3)	6	(152.4)	1/2	1940	(8.63)	2.76	(1.25)
8	(200)	3/4	8 3/4	(222.3)	12 7/8	(327.0)	2 1/8	(54.0)	7 7/8	(200.0)	5/8	2000	(8.90)	4.35	(1.97)
10	(250)	7/8	10 3/8	(263.5)	15 3/4	(400.1)	2 3/8	(60.3)	9 1/8	(231.8)	3/4	3600	(16.01)	8.22	(3.73)
12	(300)	7/8	11 5/8	(295.3)	18	(457.2)	2 1/2	(63.5)	10 1/2	(266.7)	3/4	3800	(16.90)	10.05	(4.56)
14	(350)	1	12 3/4	(323.9)	19 3/4	(501.7)	2 5/8	(66.7)	11 1/4	(285.8)	7/8	4200	(18.68)	12.97	(5.88)
16	(400)	1	14 1/8	(358.8)	22 1/8	(562)	2 5/8	(66.7)	13 5/8	(346.1)	1	4600	(20.46)	20.85	(9.46)
18	(450)	1	16 1/2	(419.1)	25 1/2	(647.7)	3 1/2	(88.9)	15	(381.0)	1 1/8	4800	(21.35)	24.75	(11.23)
20	(500)	1 1/4	18	(457.2)	28	(711.2)	4 1/8	(104.8)	16 1/8	(409.6)	1 1/4	4800	(21.35)	42.45	(19.26)
24	(600)	1 1/4	20 1/4	(514.4)	32 1/4	(819.2)	4 3/4	(120.7)	18 3/8	(466.7)	1 1/4	4800	(21.35)	48.65	(22.07)
30	(750)	1 1/4	24 1/2	(622.3)	38 7/8	(987.4)	5 1/2	(139.7)	21 1/2	(546.1)	1 1/4	6000	(26.69)	69.83	(31.67)
36	(900)	1 1/2	32	(812.8)	50	(1270.0)	8 3/4	(222.3)	30	(762.0)	1 1/2	9500	(42.26)	175.00	(79.38)

Adjustment "D" (Top of cross bolt to bottom of hanger rod nut.)

Unless otherwise specified, all dimensions on drawings and in charts are in inches and dimensions shown in parentheses are in millimeters.